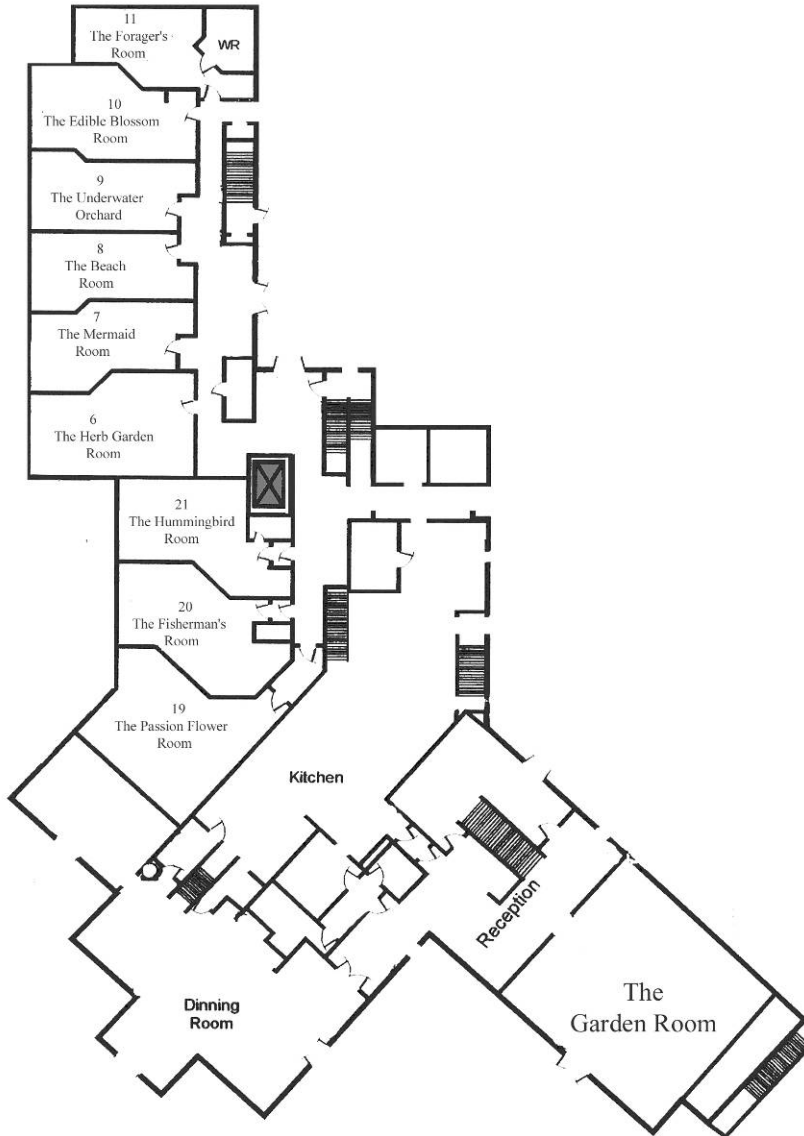
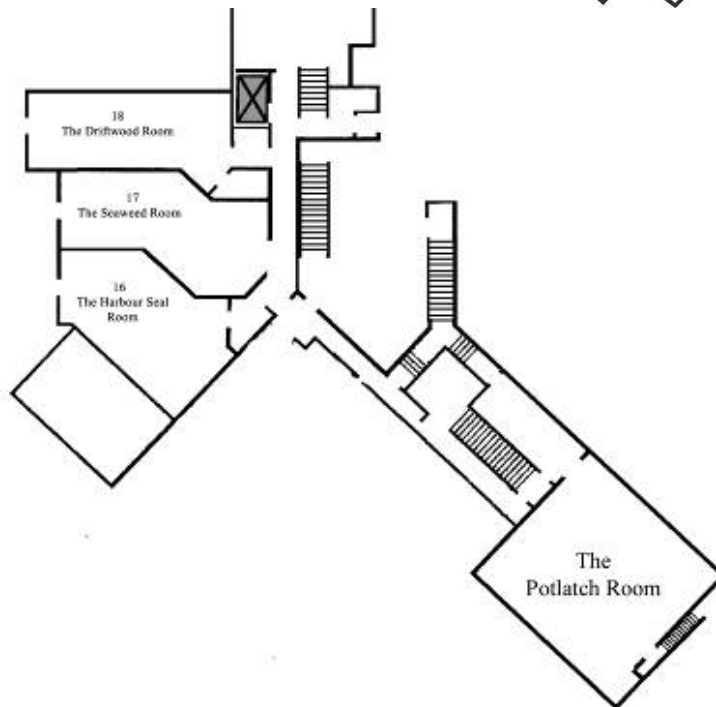


FLOORPLAN LAYOUTS

MAIN FLOOR



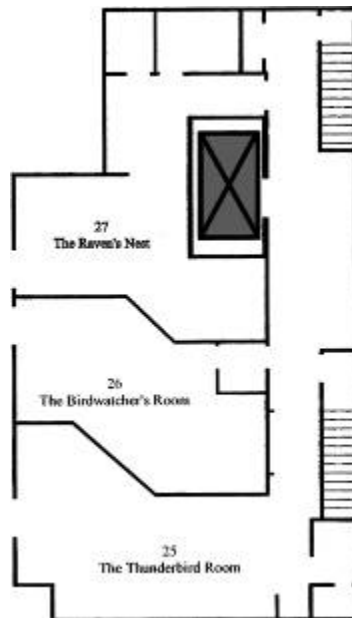
LOWER FLOOR



2ND FLOOR



3RD FLOOR





Garden Room

Dimensions: 34' x 30'
1,020 sq ft

Seated Capacity: 60

Standing Capacity: 80

Amenities:

- Ocean view
- Fireplace
- Private access to gardens
- Wheelchair accessible
- Bar

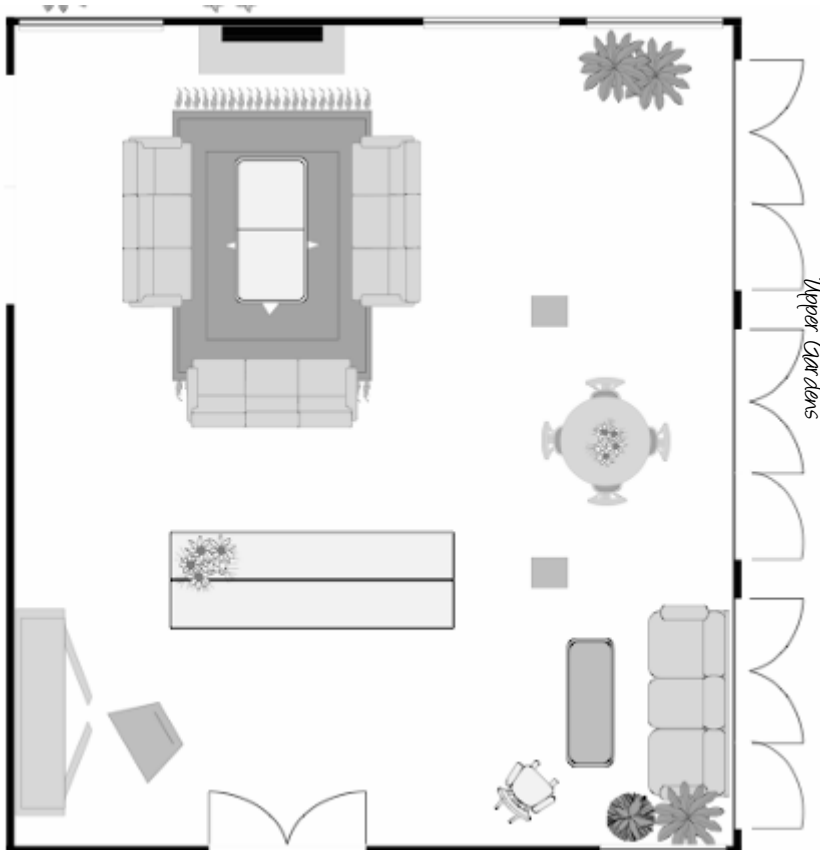
Available options:

- A/V equipment
- Dance floor



Local coastal art, colorful flowers, crisp white linens and a refreshing sea breeze- this is our Garden Room. It could be the setting of your wedding reception, business meeting or private dinner function. In the summer, open the French doors and windows to allow sunlight and ocean breezes to spill in and rejuvenate the body and mind. Plush sofas, Persian carpets and a wood-burning fireplace also make the Garden Room perfect for anything from a cozy winter celebration to a warm summer reception. It befits the formal or casual, offering a homey, living room feel. The Upper Gardens lie directly outside of the 3 sets of French doors and the ocean views are lovely from its step. Let your guest stretch their legs or step in style in the fresh Juan de Fuca breezes with the privacy of your own entrance to the common gardens.

This venue seats up to 60 guests for sit down dinners and 80 guests for cocktail receptions (hors d'oeuvres and bar service).



Main Lobby



Potlatch Room

Dimensions: 34' x 30'
1,020 sq ft

Seated Capacity: 60

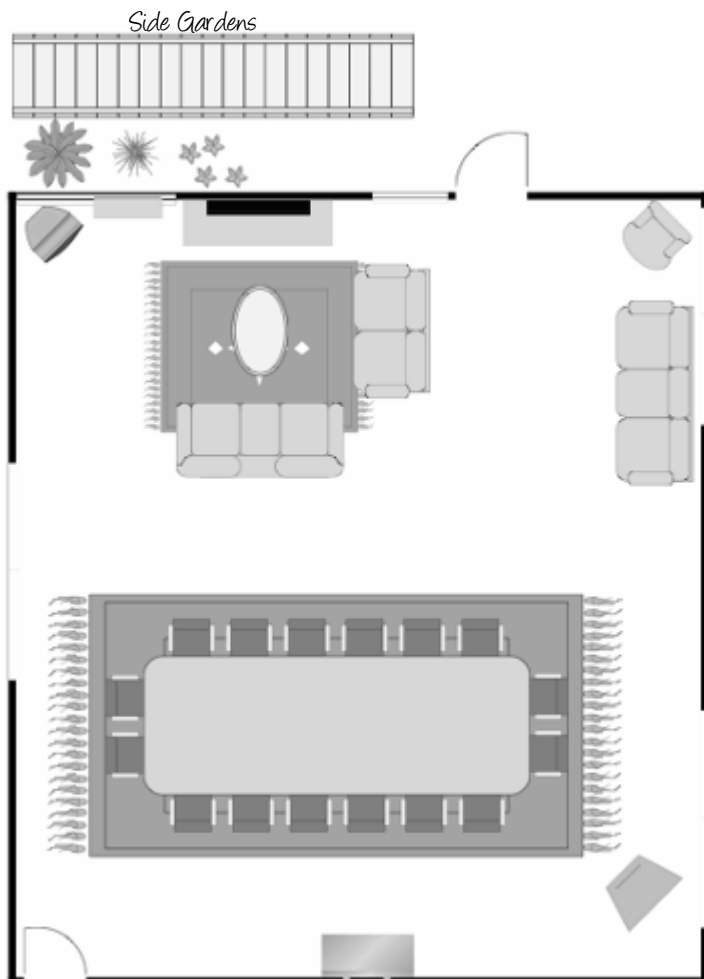
Standing Capacity: 80

Amenities:

- Fireplace
- Superior Privacy
- Bar
- Television
- DVD/VCR
- Cable



Our "Woman of the Woods" welcoming totem will greet you as you first enter the Potlatch Room. The First Nations of our area held traditional celebrations, called Potlatches, to mark significant events in their communities. Join the Philip Family, Innkeepers of Sooke Harbour House, in a venue as West Coast as it is magical. The Potlatch Room features a beach stone fireplace, cedar walls, Douglas fir details, hardwood floors and large, art-etched windows. It is the most private of our meeting rooms on the lower floor of the Inn. With its own stairs to the side gardens and no access from the lobby, this room allows you to feel completely secluded from the public and enjoy your function away from the crowd. The Potlatch Room is ideal for dinners and receptions with dancing. It's also perfect for meetings in which guests want lots of natural light without any distraction. Its linear design and high ceilings are modern yet comfortable and it eludes a cozy yet formal feel to all who gather there. Plated service is available for up to 60 people. Bar service and stand up hors d'oeuvres receptions are available for up to 80 guests.





Main Dining Room

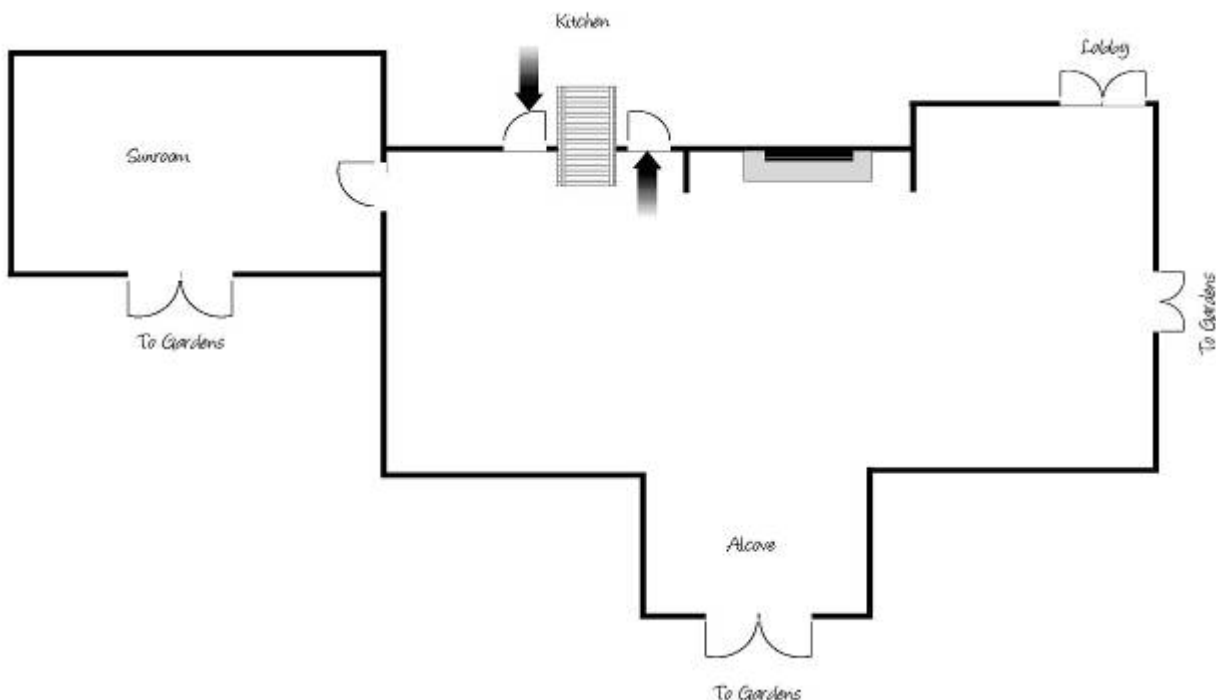
Dimensions: 44' X 22'
968 sq ft
Alcove: 9' X 14' (126 sq ft)
Seated Capacity: 90
Amenities:
● Fireplace
● Ocean View
● Sunroom



Have your breakfast meeting or luncheon in our elegant and comfortable dining room. Dine in style surrounded by ubiquitous West Coast art, lounge in overstuffed couches by a glowing wood burning fireplace and enjoy the views of the herb and flowerbeds leading to the ocean and mountains beyond. This venue has the most commanding panorama and is the epitome of West Coast Dining... in style. There is no better place to dine for scenery and elegance than the Sooke Harbour House dining room.

From a cuisine standpoint, we have made a sometimes difficult, but usually rewarding, commitment to use only the best ingredients from the Southwestern Coast of Vancouver Island. To this end, through the years, we have developed a network of local organic growers that supply us with their wonderful meats and produce. The sea, of course, yields a rich variety of shellfish, fish and sea vegetables that underscore the seafood emphasis of our daily changing menus. Seasonal foragers reap wild greens and mushrooms from our relatively unspoiled wilderness to grace our plates. Many First Nations traditional foods, from uncommon fish to berries, local mushrooms and edible flowers are also part of our kitchen's palette.

This venue is only available for breakfast and luncheon functions as it is open to guests and the community for dinner, which begins at 5:30. Functions booked for this venue would end at 3:30pm.





Summer Pavilion

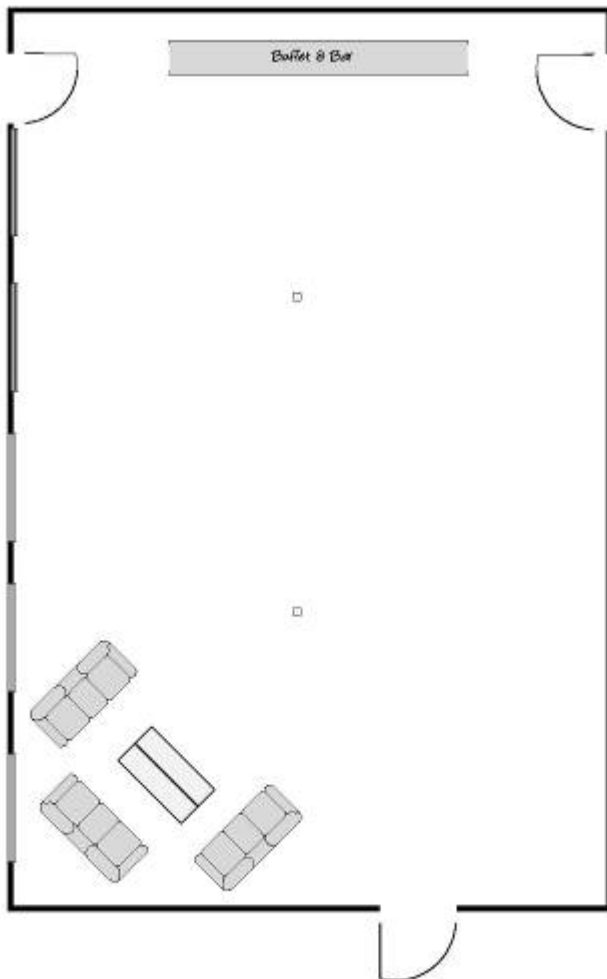
Dimensions: 40' x 60'
2,400 sq ft
Seated Capacity: 150
Standing Capacity: 200

Amenities:

- Wheelchair accessible
- Bar

Available options:

- A/V equipment



Summer Pavilion

The Summer Pavilion is located in the beautiful gardens on the upper lawn. This elegant, large white tent is decorated with hand-painted scenic interior walls, plush sofas, Persian rugs and candelabras. Available for summer events, this venue is ideal for receptions, buffet dinners and dancing. It seats up to 150 people and is available from May until the end of September.

Immediately adjacent to the Pavilion and nestled amongst kitchen gardens is a cedar gazebo. It is an excellent addition to any event and is an ideal location for photography. It creates a separate conversational area for your guests to wander and mingle.



Meeting/Function Space Capacities

Measurements	Garden Room:	Potlatch Room:	Summer Pavilion	Dining Room
Sq ft	1020	1020	2400	968 Alcove = 126
Dimensions	34' X 30'	34' X 30'	40' X 60'	44' X 22' Alcove=9' X 14'
Ceiling Height	9'	10' 8"	7'8" (floor to top of wall 14' 5" (floor to just before peak)	10'
Boardroom	20	26	40	20
Rounds	50	60	150(max – no dance floor)	90
Open Rounds (Half Rounds)	25	30	75	45
Cocktail Reception (standup)	80	90	200	100
Theatre Style	60	60	250	40
Hollow square	24	24	30	N/A
U-Shape	19	19	25	N/A
Comments:	Fireplace, 2 pillars, garden view	Fireplace, no pillars, private entrance	2 pillars, Gazebo area & reception area	Fireplace, no pillars, alcove, ocean view

